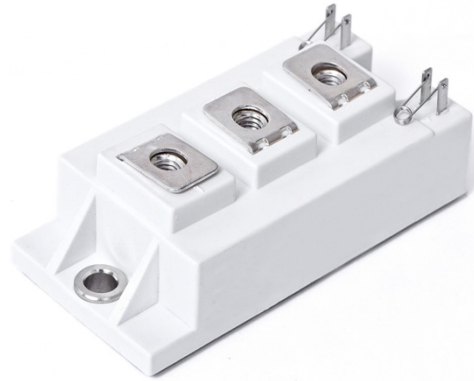


PRODUCT FEATURES

- High short circuit capability, self limiting short circuit current
- IGBT CHIP(T4 Fast Trench+Field Stop technology)
- $V_{CE(sat)}$ with positive temperature coefficient
- Fast switching and short tail current
- Free wheeling diodes with fast and soft reverse recovery
- Low switching losses
- $T_{Jmax} = 175^{\circ}C$



APPLICATIONS

- High frequency switching application
- Medical applications
- Motion/servo control
- UPS systems

IGBT-inverter

ABSOLUTE MAXIMUM RATINGS

$T_C = 25^{\circ}C$ unless otherwise specified

Symbol	Parameter/Test Conditions		Values	Unit
V_{CES}	Collector Emitter Voltage	$T_J = 25^{\circ}C$	1200	V
V_{GES}	Gate Emitter Voltage		± 20	
I_C	DC Collector Current	$T_C = 25^{\circ}C$	300	A
		$T_C = 95^{\circ}C$	200	
I_{CM}	Repetitive Peak Collector Current	$t_p = 1ms$	400	
P_{tot}	Power Dissipation Per IGBT		1070	W

Diode-inverter

ABSOLUTE MAXIMUM RATINGS

$T_C = 25^{\circ}C$ unless otherwise specified

Symbol	Parameter/Test Conditions		Values	Unit
V_{RRM}	Repetitive Reverse Voltage	$T_J = 25^{\circ}C$	1200	V
$I_{F(AV)}$	Average Forward Current	$T_C = 25^{\circ}C$	200	A
I_{FRM}	Repetitive Peak Forward Current	$t_p = 1ms$	400	
i^2t		$T_J = 125^{\circ}C, t = 10ms, V_R = 0V$	7750	A^2S

IGBT-inverter

ELECTRICAL CHARACTERISTICS

 $T_C = 25^\circ\text{C}$ unless otherwise specified

Symbol	Parameter/Test Conditions		Min.	Typ.	Max.	Unit	
$V_{GE(th)}$	Gate Emitter Threshold Voltage	$V_{CE}=V_{GE}, I_C=8\text{mA}$	5.4	6.0	6.5	V	
$V_{CE(sat)}$	Collector Emitter Saturation Voltage	$I_C=200\text{A}, V_{GE}=15\text{V}, T_J=25^\circ\text{C}$		2.1	2.5		
		$I_C=200\text{A}, V_{GE}=15\text{V}, T_J=125^\circ\text{C}$		2.5			
I_{CES}	Collector Leakage Current	$V_{CE}=1200\text{V}, V_{GE}=0\text{V}, T_J=25^\circ\text{C}$			1	mA	
		$V_{CE}=1200\text{V}, V_{GE}=0\text{V}, T_J=125^\circ\text{C}$			10	mA	
I_{GES}	Gate Leakage Current	$V_{CE}=0\text{V}, V_{GE}=\pm 15\text{V}, T_J=25^\circ\text{C}$	-400		400	nA	
R_{gint}	Integrated Gate Resistor			3.8		Ω	
Q_g	Gate Charge	$V_{CE}=600\text{V}, I_C=200\text{A}, V_{GE}=15\text{V}$		0.95		μC	
C_{ies}	Input Capacitance	$V_{CE}=25\text{V}, V_{GE}=0\text{V}, f=1\text{MHz}$		12.5		nF	
C_{res}	Reverse Transfer Capacitance				700		pF
$t_{d(on)}$	Turn on Delay Time	$V_{CC}=600\text{V}, I_C=200\text{A}$ $R_G=3.6\Omega,$ $V_{GE}=\pm 15\text{V},$ Inductive Load	$T_J=25^\circ\text{C}$	160		ns	
			$T_J=125^\circ\text{C}$	170		ns	
			$T_J=150^\circ\text{C}$	180		ns	
t_r	Rise Time		$T_J=25^\circ\text{C}$	70		ns	
			$T_J=125^\circ\text{C}$	80		ns	
			$T_J=150^\circ\text{C}$	85		ns	
$t_{d(off)}$	Turn off Delay Time	$T_J=25^\circ\text{C}$	420		ns		
		$T_J=125^\circ\text{C}$	470		ns		
		$T_J=150^\circ\text{C}$	500		ns		
t_f	Fall Time	$T_J=25^\circ\text{C}$	40		ns		
		$T_J=125^\circ\text{C}$	60		ns		
		$T_J=150^\circ\text{C}$	70		ns		
E_{on}	Turn on Energy	$V_{CC}=600\text{V}, I_C=200\text{A}$ $R_G=3.6\Omega,$ $V_{GE}=\pm 15\text{V},$ Inductive Load	$T_J=125^\circ\text{C}$	18.5		mJ	
			$T_J=150^\circ\text{C}$	20.5		mJ	
E_{off}	Turn off Energy		$T_J=125^\circ\text{C}$	11		mJ	
			$T_J=150^\circ\text{C}$	12		mJ	
I_{sc}	Short Circuit Current		$t_{psc} \leq 10\mu\text{s}, V_{GE}=15\text{V}$ $T_J=125^\circ\text{C}, V_{CC}=600\text{V}$		800		A
R_{thJC}	Junction to Case Thermal Resistance (Per IGBT)				0.14	K /W	

Diode-inverter

ELECTRICAL CHARACTERISTICS

 $T_C = 25^\circ\text{C}$ unless otherwise specified

Symbol	Parameter/Test Conditions		Min.	Typ.	Max.	Unit
V_F	Forward Voltage	$I_F=200\text{A}, V_{GE}=0\text{V}, T_J=25^\circ\text{C}$		1.65	2.15	V
		$I_F=200\text{A}, V_{GE}=0\text{V}, T_J=125^\circ\text{C}$		1.65		
t_{rr}	Reverse Recovery Time	$I_F=200\text{A}, V_R=600\text{V}$		400		ns
I_{RRM}	Max. Reverse Recovery Current	$di_F/dt=-2500\text{A}/\mu\text{s}$		180		A
Q_{RR}	Reverse Recovery Charge	$T_J=125^\circ\text{C}$		38.8		μC
E_{rec}	Reverse Recovery Energy			15.5		mJ
R_{thJCD}	Junction to Case Thermal Resistance (Per Diode)				0.25	K /W

MODULE CHARACTERISTICS

$T_C = 25^\circ\text{C}$ unless otherwise specified

Symbol	Parameter/Test Conditions		Values	Unit
T_{Jmax}	Max. Junction Temperature		175	°C
T_{Jop}	Operating Temperature		-40~150	
T_{stg}	Storage Temperature		-40~125	
V_{isol}	Isolation Breakdown Voltage	AC, 50Hz(R.M.S), t=1minute	3000	V
CTI	Comparative Tracking Index		> 200	
Torque	to heatsink	Recommended (M6)	3~5	Nm
	to terminal	Recommended (M6)	2.5~5	Nm
Weight			200	g

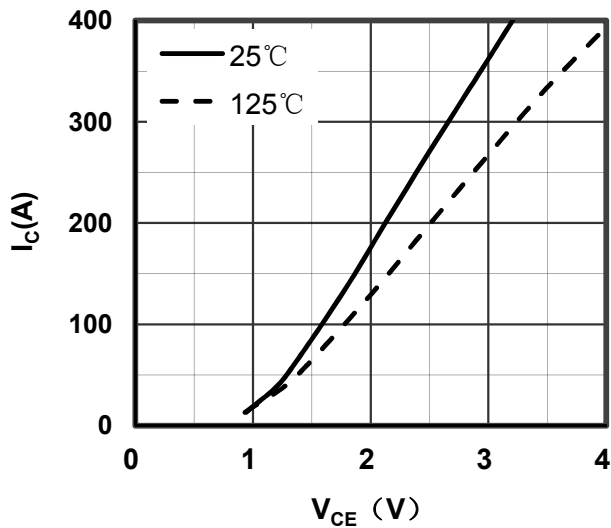


Figure 1. Typical Output Characteristics IGBT-inverter

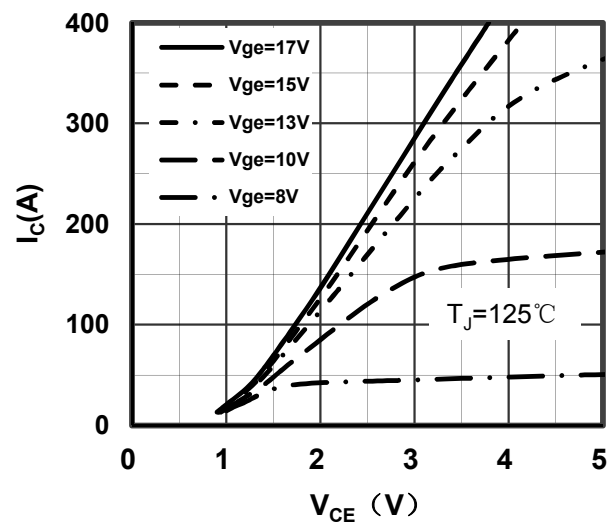


Figure 2. Typical Output Characteristics IGBT-inverter

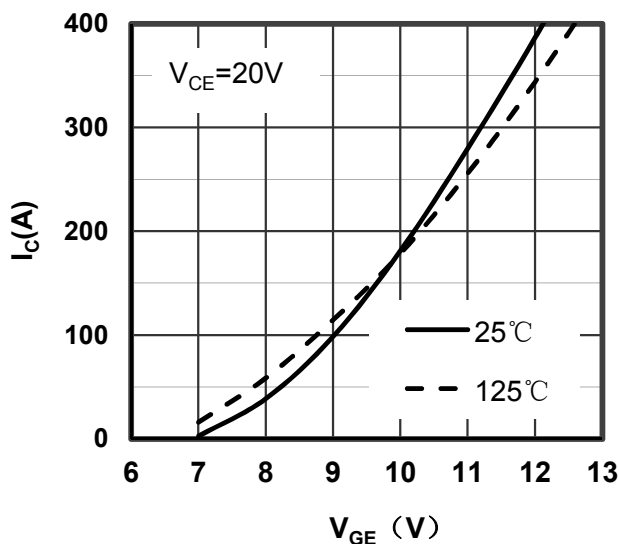


Figure 3. Typical Transfer Characteristics IGBT-inverter

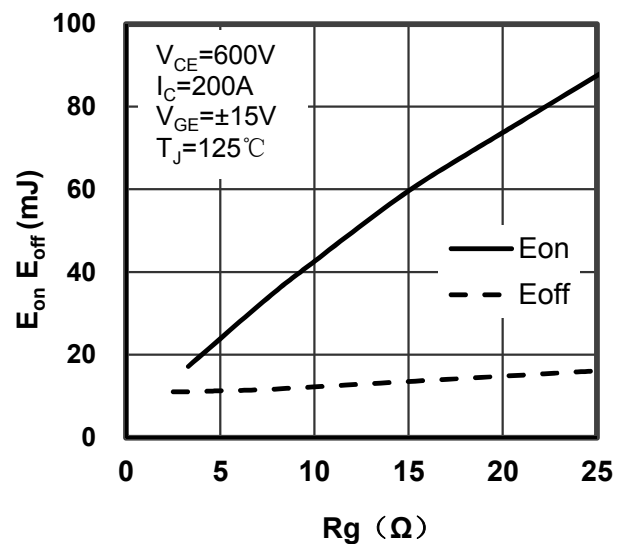


Figure 4. Switching Energy vs Gate Resistor IGBT-inverter

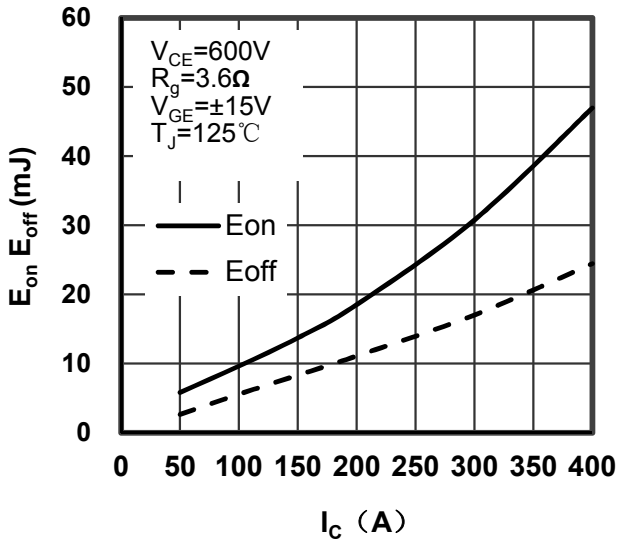


Figure 5. Switching Energy vs Collector Current IGBT-inverter

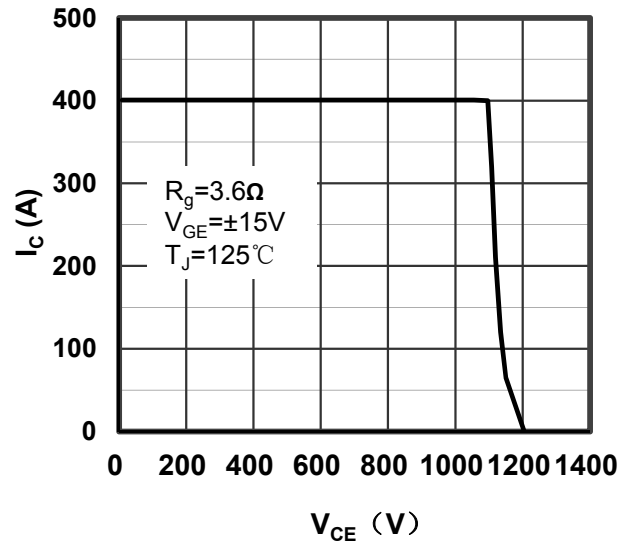


Figure 6. Reverse Biased Safe Operating Area IGBT-inverter

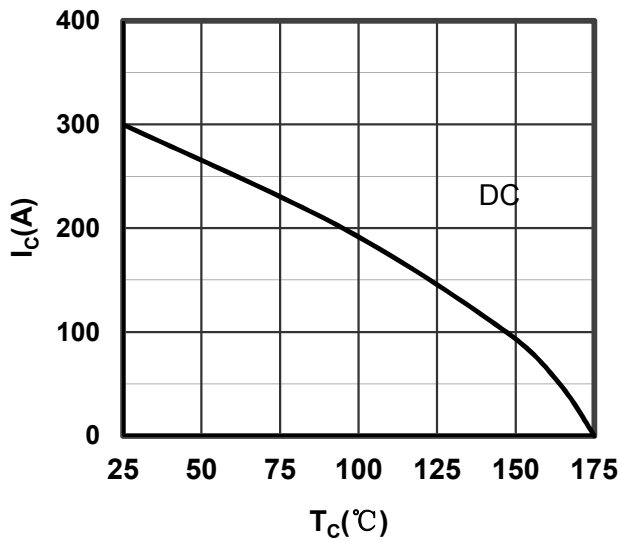


Figure 7. Collector Current vs Case temperature IGBT-inverter

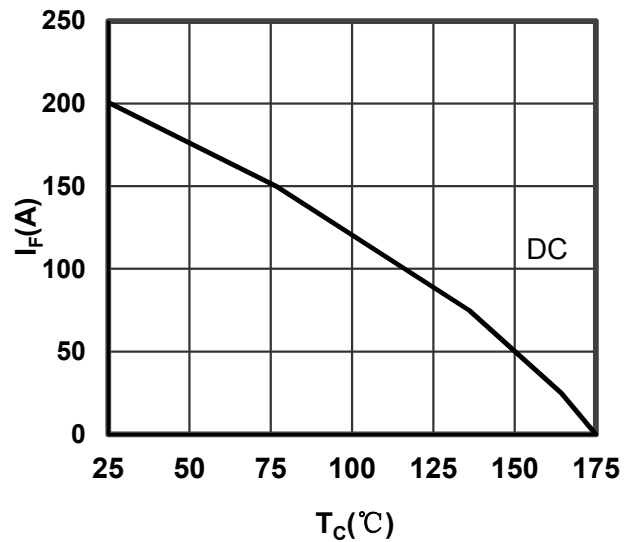


Figure 8. Forward current vs Case temperature Diode-inverter

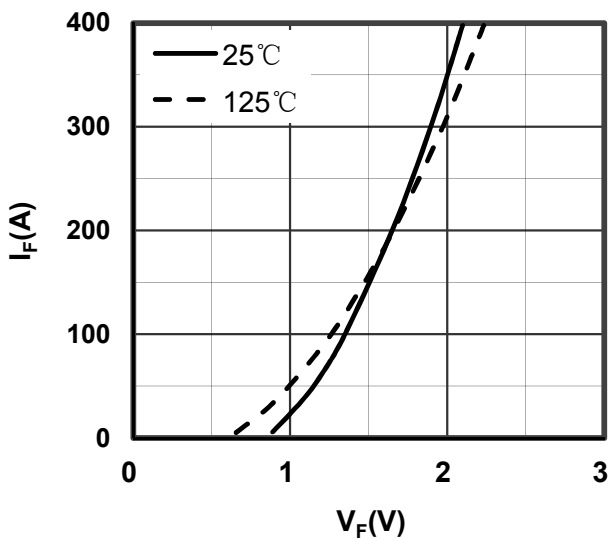


Figure 9. Diode Forward Characteristics Diode-inverter

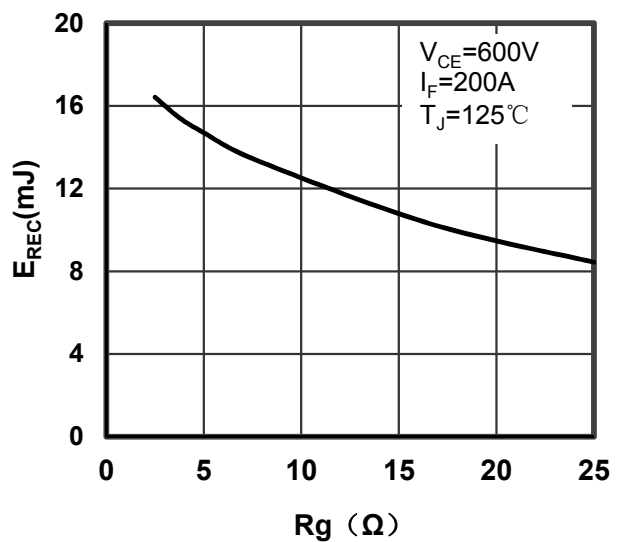


Figure 10. Switching Energy vs Gate Resistor Diode-inverter

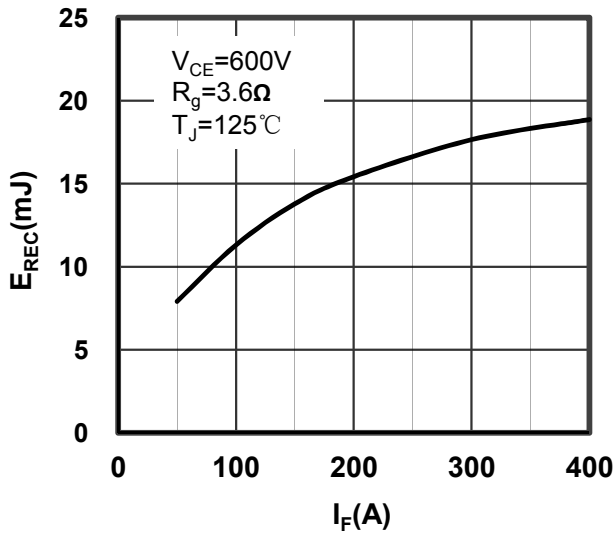


Figure 11. Switching Energy vs Forward Current Diode-inverter

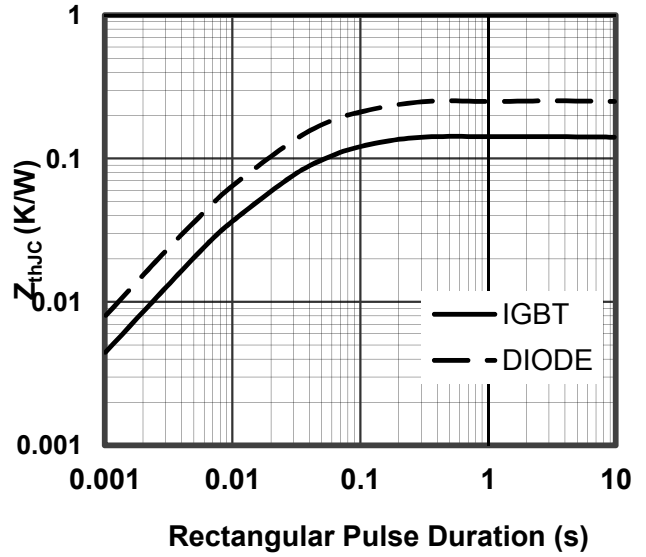


Figure 12. Transient Thermal Impedance of Diode and IGBT-inverter

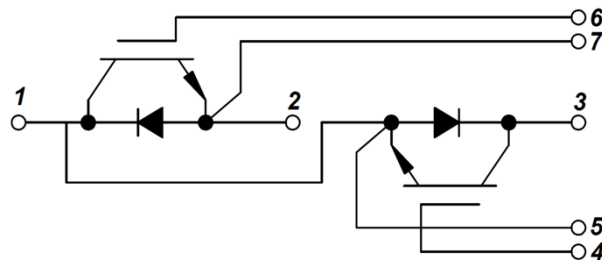
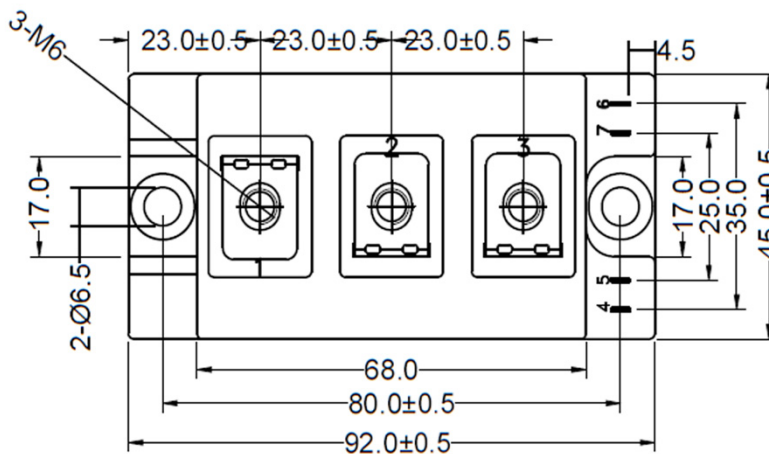
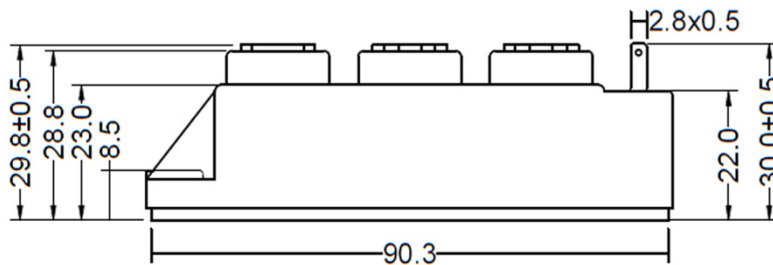


Figure 13. Circuit Diagram



Dimensions in (mm)
Figure 14. Package Outline